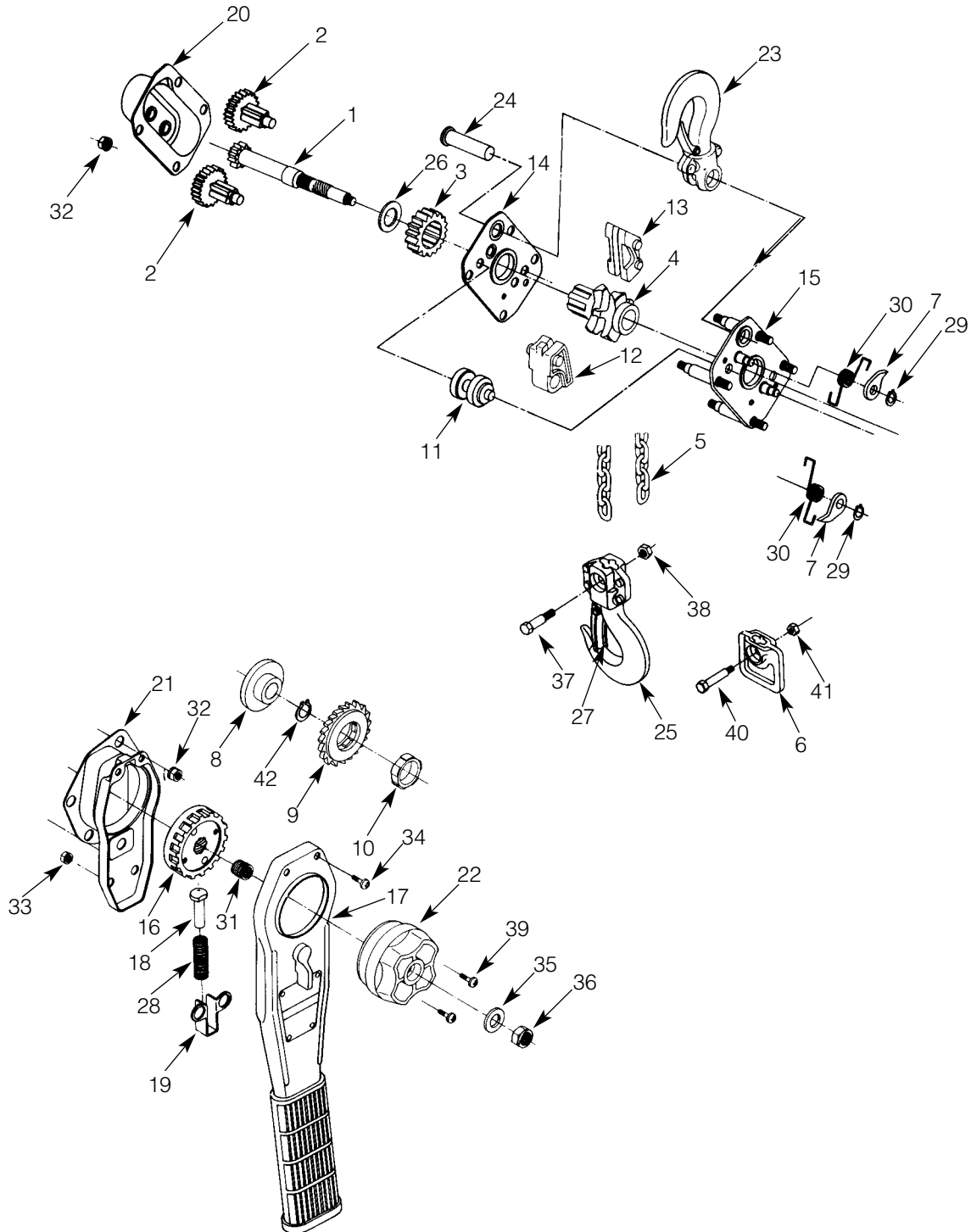


Contact your nearest Coffing Hoists Service Center for parts and service or a complete list at [info@tresterhoist.com](mailto:info@tresterhoist.com). Please have the hoist model number, serial number, and part number with description available for reference.

## 3 Ton Model



Contact your nearest Coffing Hoists Service Center for parts and service or a complete list at [info@trestlerhoist.com](mailto:info@trestlerhoist.com). Please have the hoist model number, serial number, and part number with description available for reference.

Parts List for 3 Ton Model

Ref. No.	Description	Part No.	Qty
1	Pinion Shaft	NRB4001	1
2	Pinion with Pinion Gear	NRB4002T	2
3	Load Gear	NRB4004	1
4	Load Sheave	NRB4005	1
5	Load Chain	V9	1
6	Stop Grip	NRB40062	1
7	Pawl	NRB4007	2
8	Disc Hub	KRB4008	1
9	Ratchet Wheel	KRB4009	1 set
10	Interlocking Ring	KRB4011	1
11	Chain Guide	NRB4012	1
12	Stripper	NRB4015	1
13	Chain Guide	NRB4017	1
14	Gear Side Plate	NRB4018	1
15	Handle Side Plate	NRB4020	1
16	Disc Nut	KRB4023	1
17	Operating Handle	NRB4024	1
18	Spring Shaft	IRB3030	1
19	Shaft Base	IRB3031	1
20	Gear Cover	NRB4037	1
21	Ratchet Cover	NRB4040T	1
22	Guide Handle	IRB4042	1
23	Top Hook Assembly	NRB4048U	1
24	Yoke Pin	NRB4051	1
25	Bottom Hook Assembly	NRB4053U	1
26	Pinion Shaft Washer	NRB4059	1
27	Safety Latch Assembly	KHH5074T	2
28	Change Over Spring	IRB3116	1
29	Snap Ring	SRC51012	2
30	Pawl Spring	KHH5010	2
31	Free Wheeling Spring	NRB4106	1
32	Spring Nut	HSNM10	8
33	Spring Nut	HSNM8	2
34	Screw & Spring Washer	CMSM6 x 10S2	2
35	Flat Washer	IRB4136	1
36	Lock Nut	HNNM8	1
37	Chain Fastening Bolt	NRB4124	1
38	Lock Nut	HUN1M10	1
39	Screw & Spring Washer	CMSM6 x 25S2	2
40	Socket Bolt	LHH5048	1
41	Lock Nut	HNNM8	1
42	Snap Ring	SRC51014	1